

1 Fix bottom left or right rail onto wall, starting with the top screw hole.



2 Ensure rail is level and continue fixing.



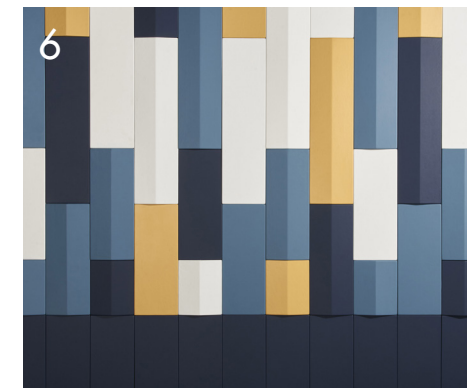
3 Fix next rail into position by carefully using a pitched panel as a guide for distance. Again, ensure rails are level and fix into wall. For the first and last rails, ensure panels slide into the outer slots so that slots are not visible when fully assembled.



4 Insert panel hooks into rail slots then push down to slide into place. Always ensure that panels are installed starting at the bottom and working up.



5 Take care that when joining rails vertically, that the distance between the top and bottom slots of new rails are equal to that of all slots on the rails.



6 Repeat this process for the entire wall. Remember to always work left to right and bottom to top.

Wall Panel & Tile Installation Instructions



Alpine Tiles

Drilled Board Installation

Cast Panels

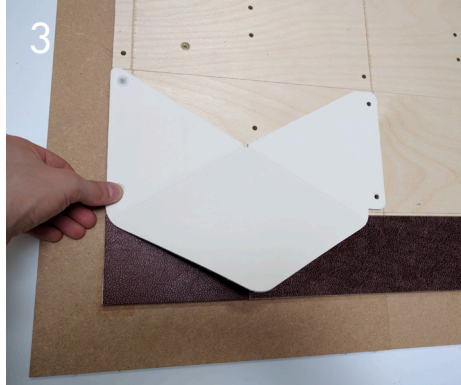
Fast Mount Installation

1

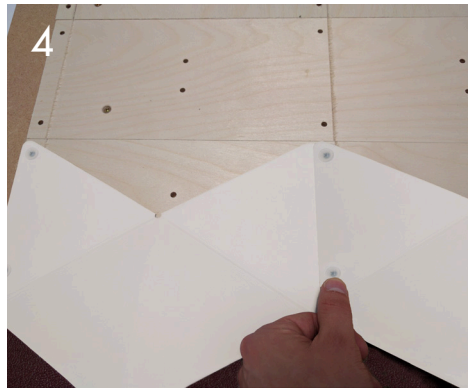
Locate bottom, pre-wrapped mounting boards and install from left to right on the wall using customer provided screws suitable for the wall that you are installing the mounting boards onto. Countersunk screw holes are provided, but screws may be fastened through the mounting boards at any point in order to fasten to a stud.



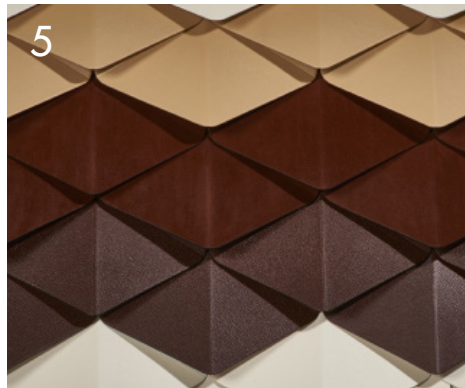
Once the bottom row is complete, continue adding main mounting boards above, ensuring all boards are aligned.



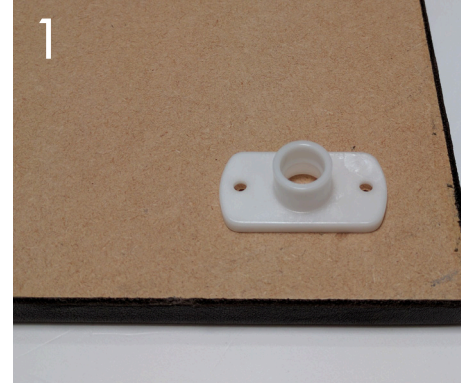
Select the main tile required for the position above the bottom left tile. Using the mounting pegs, place this tile into position on the mounting boards and insert the two left pegs only, leaving the holes on the right of this tile open.



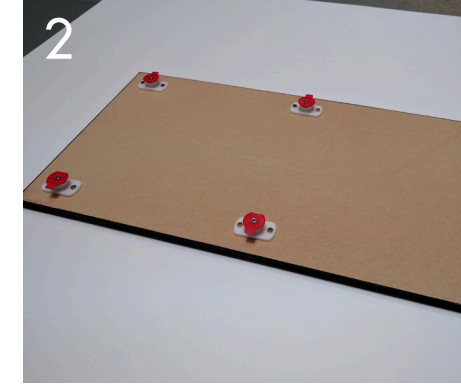
Select the next main tile. Place this tile into position, ensuring that the holes on the left of this tile align with the open holes on the tile to the immediate left and use the mounting pegs to attach these together.



Repeat this process for the entire wall. Remember to always work left to right and bottom to top. Use painted mounting pegs for the top row.



Attach the fast mount female clips to the back side of all panels into pre-drilled pilot holes



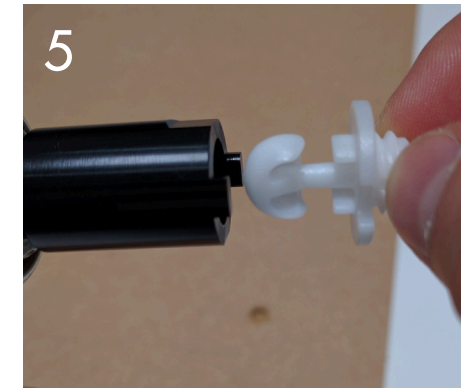
Start with one panel (ideally a corner or edge panel for ease of alignment), insert center point markers into female clips.



Carefully usher the panel up to your wall and once happy with the alignment, firmly but carefully apply pressure onto the panel. Once removed, the center points will mark the wall ready for you to drill.



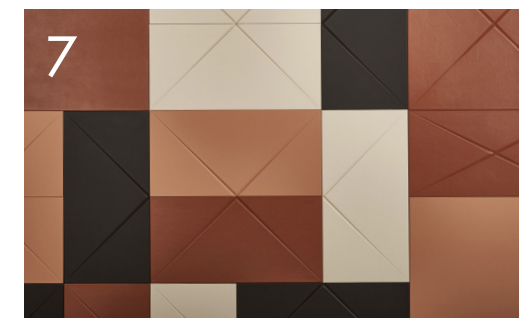
Using the enclosed 10mm drill bit, drill a hole into the wall where the center points have marked the wall.



Using the enclosed install tool for the self-tapping male clips, ensure the clips align with the install tool and fix these all into the wall.



Once all the self-tapping male clips are installed, place the panel onto these, making sure the female and male clips align, then carefully apply firm pressure until the panel 'clicks' into place.



Repeat this process, using the first installed panel as a starting point for the adjacent panels, until all panels are installed as per the design elevation.