



Impress

GARRETT®

LEATHER

Impress

Impress is produced using a combination of heat and pressure to emboss patterns on most types of leather. The photographs in this brochure are to show pattern only. After selecting a pattern, specify the leather and color of your choice.

All Impress patterns, except Caiman, are sold in half hide increments. Caiman is sold in both whole and half hides. Lead time for all Impress patterns is two weeks. A full deposit is required on all Impress orders.

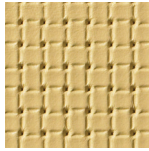
Geometric



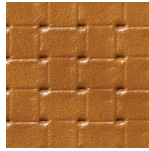
Diamond
pg 2



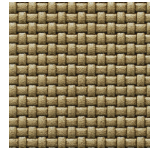
Large Diamonds
pg 2



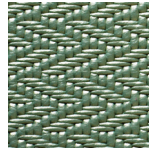
Small Weave
pg 3



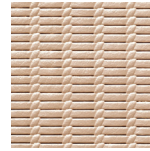
Large Weave
pg 3



Micro Woven
pg 4



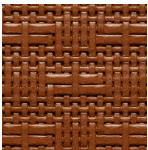
Chevron Weave
pg 4



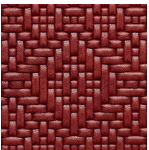
Basket
pg 5



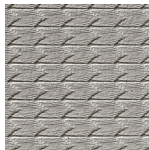
Braid
pg 5



Rattan
pg 6

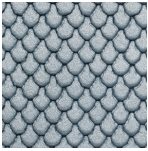


Bases
pg 6



Herringbone
pg 7

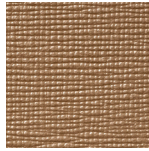
Organic



Teardrop
pg 7



Bark
pg 8



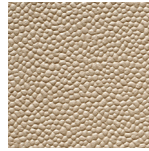
Boxboard
pg 8



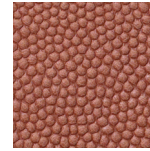
Sand Dune
pg 9



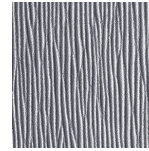
Dreamcatcher
pg 9



Scotch Grain
pg 10



Football
pg 10



Waterfall
pg 11

Animal



Dinosaur
pg 11



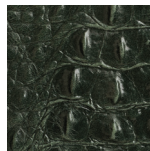
Jumbo Croc
pg 12



Florida Gator
pg 12



Alligator
pg 13



Caiman
pg 13



Anaconda
pg 14



Python
pg 14



Ostrich
pg 15



Asian Ostrich
pg 15



Baby Ostrich
pg 16



Lizard
pg 16

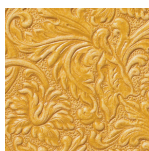
Floral



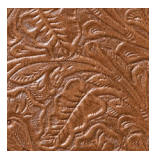
Lace
pg 17



Flower Garden
pg 17



Saddle
pg 18



Western Tool
pg 18



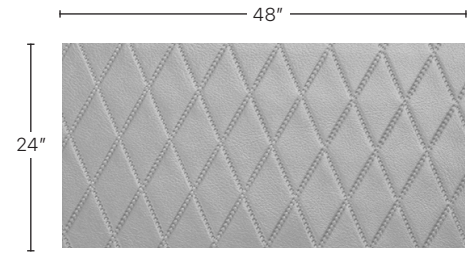
Paisley
pg 19

Ordering Information 20

Layout Options 20

Geometric

Diamond



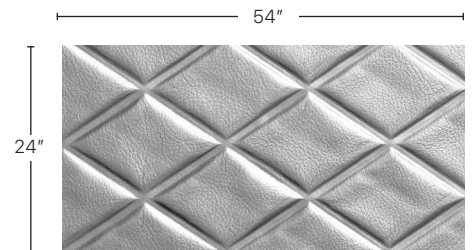
Direction of pattern on plate. Not to scale.

Photo is to show pattern only.
Choose almost any Garrett color.

Vertical Repeat: 2"
Horizontal Repeat: 1"

Pictured: Diamond embossed on
LX3309 Luxianna Whiskey.

Large Diamonds



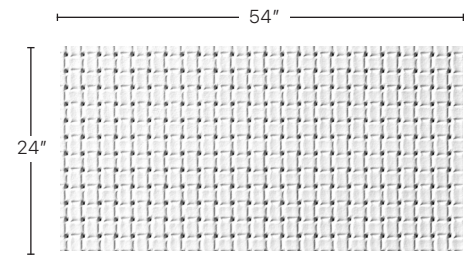
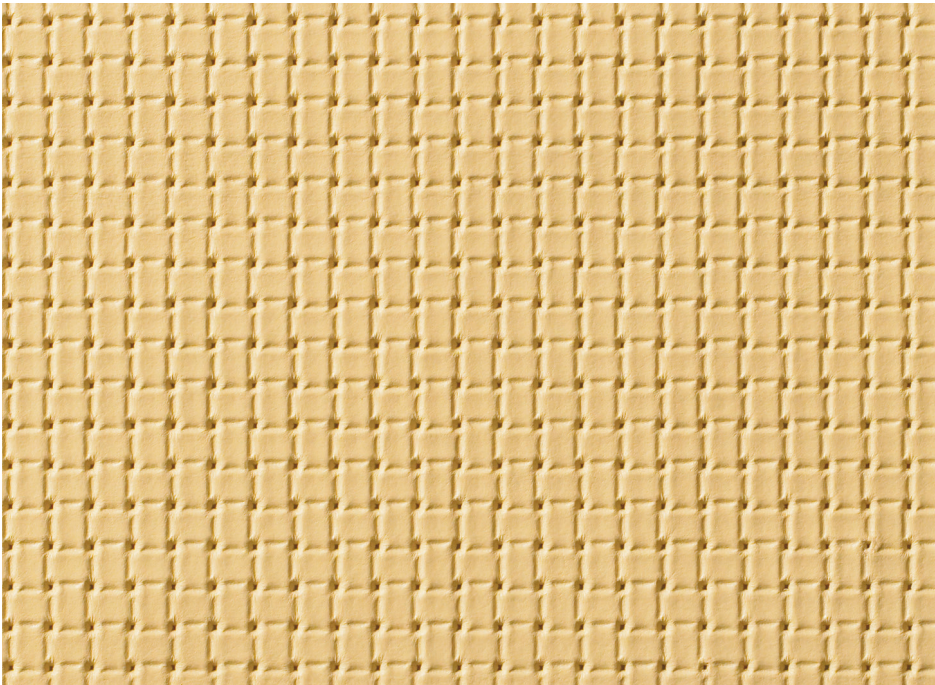
Direction of pattern on plate. Not to scale.

Photo is to show pattern only.
Choose almost any Garrett color.

Vertical Repeat: 2"
Horizontal Repeat: 3"

Pictured:
Large Diamonds embossed on
P381 Pearlessence Copper.

Small Weave



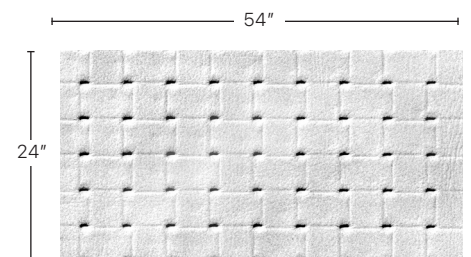
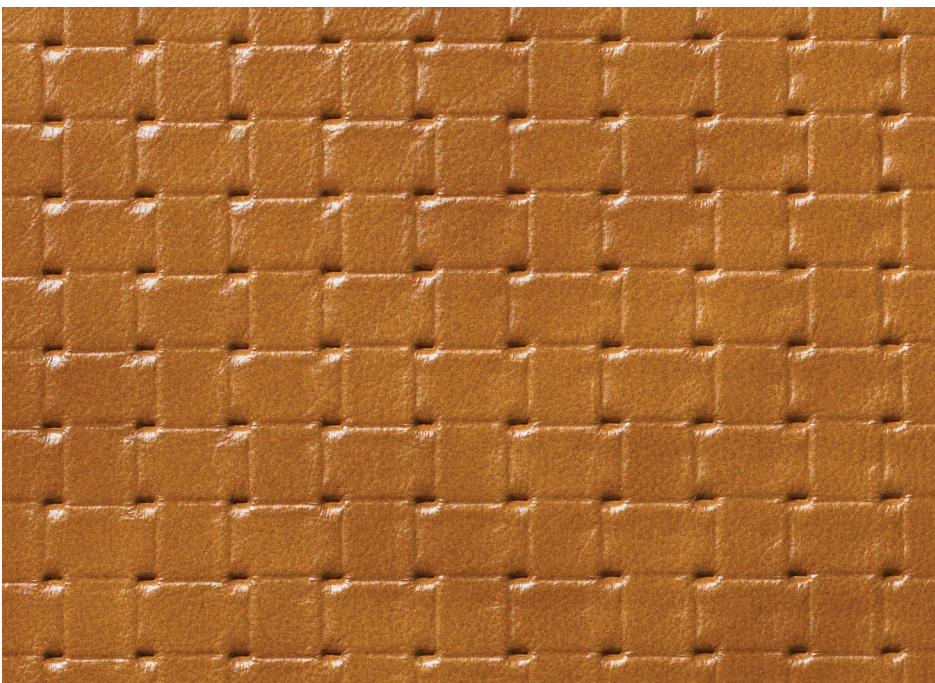
Direction of pattern on plate. Not to scale.

Photo is to show pattern only.
Choose almost any Garrett color.

Vertical Repeat: $1/8''$
Horizontal Repeat: $1/8''$

Pictured: Small Weave
embossed on C681 Chatham
Summer Yellow.

Large Weave



Direction of pattern on plate. Not to scale.

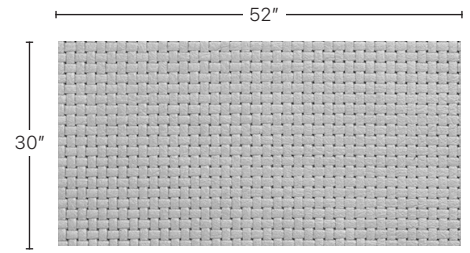
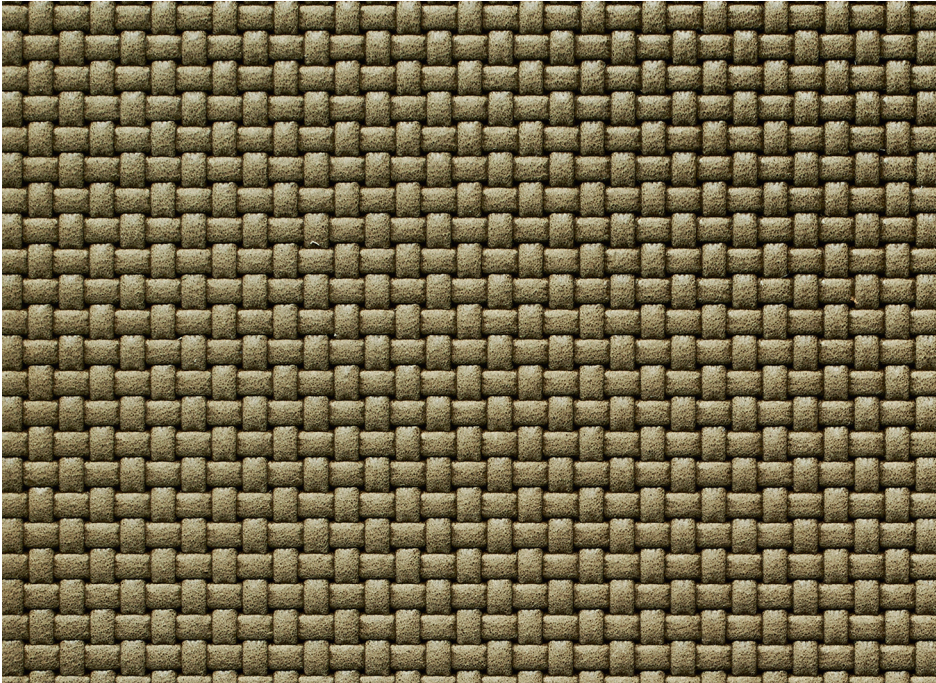
Photo is to show pattern only.
Choose almost any Garrett color.

Vertical Repeat: $3/8''$
Horizontal Repeat: $1/2''$

Pictured: Large Weave
embossed on GL2087
Glazed Bourbon.

Geometric

Micro Woven



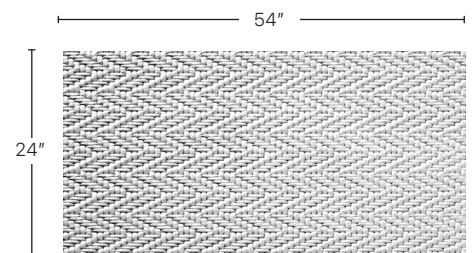
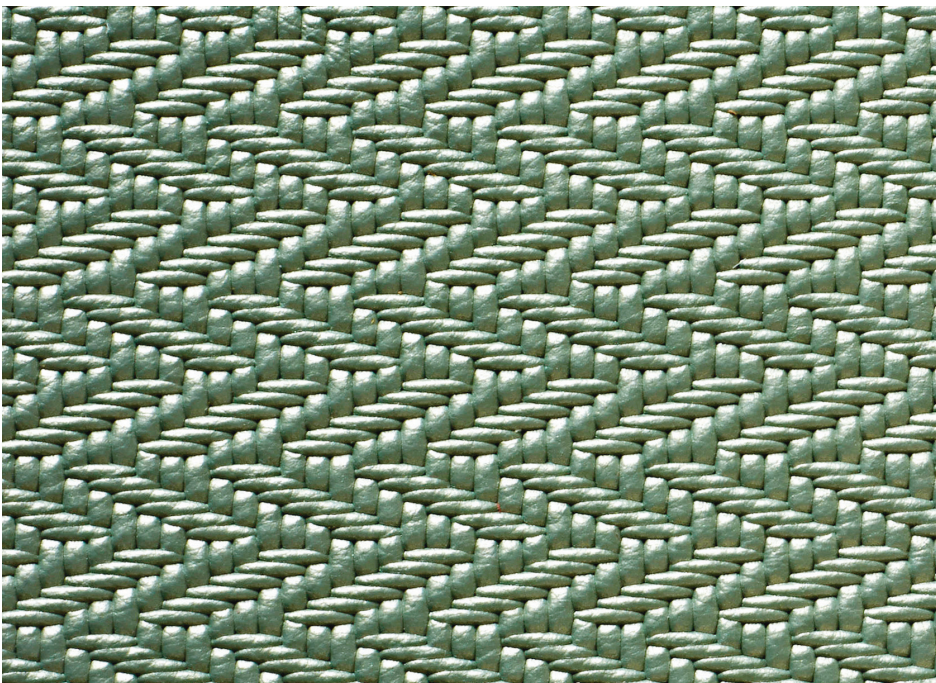
Direction of pattern on plate. Not to scale.

Photo is to show pattern only.
Choose almost any Garrett color.

Vertical Repeat: 1/8"
Horizontal Repeat: 1/8"

Pictured: Micro Woven embossed on
DIS9075 Distressed Fennel.

Chevron Weave



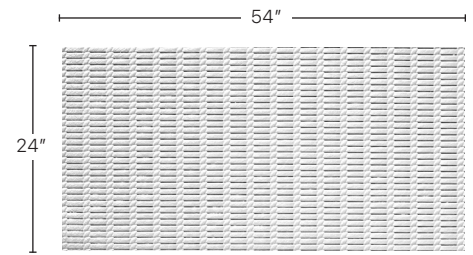
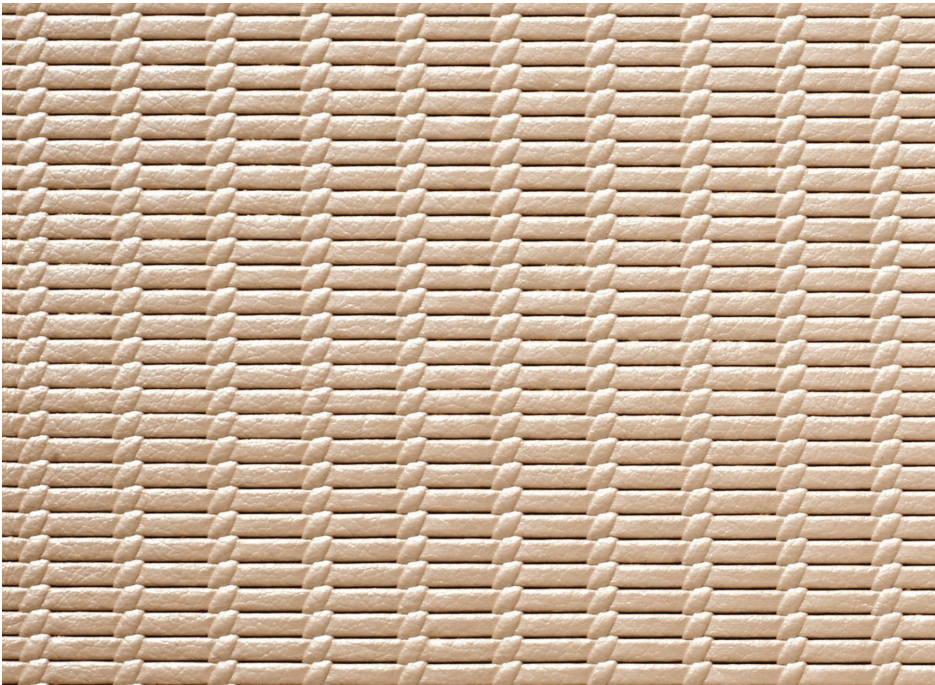
Direction of pattern on plate. Not to scale.

Photo is to show pattern only.
Choose almost any Garrett color.

Vertical Repeat: 7/8"
Horizontal Repeat: 3/4"

Pictured:
Chevron Weave embossed on
P350 Pearlescence Tropic.

Basket



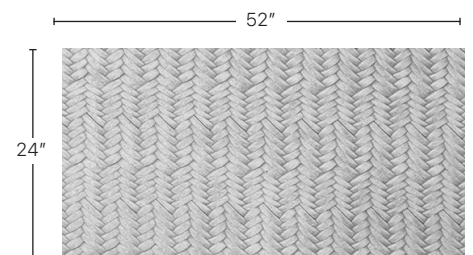
Direction of pattern on plate. Not to scale.

Photo is to show pattern only.
Choose almost any Garrett color.

Vertical Repeat: 1/2"
Horizontal Repeat: 1/8"

Pictured: Basket embossed on
P307 Pearlessence Milkweed.

Braid



Direction of pattern on plate. Not to scale.

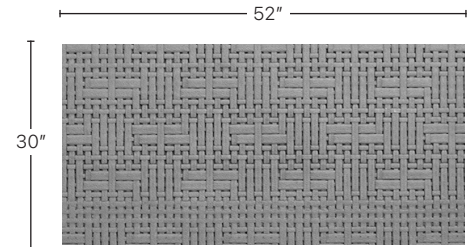
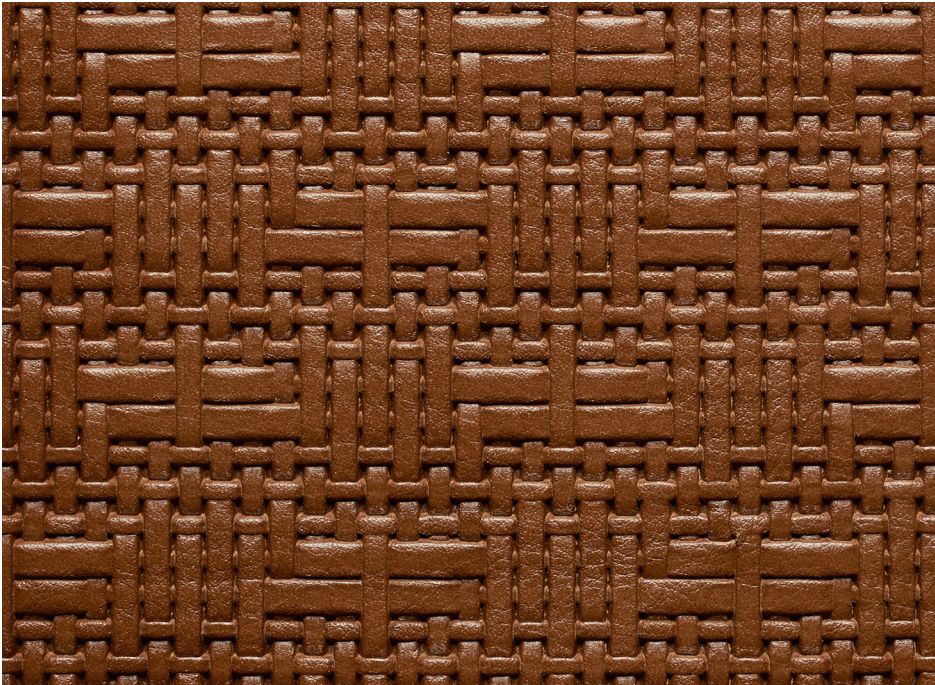
Photo is to show pattern only.
Choose almost any Garrett color.

Vertical Repeat: 1/8"
Horizontal Repeat: 5/8"

Pictured: Braid embossed on
DIS9001 Distressed Irish Cream.

Geometric

Rattan



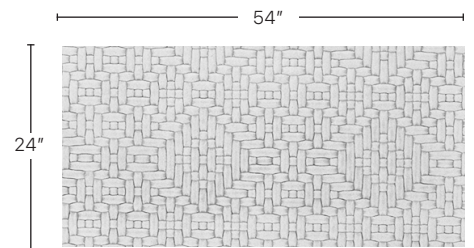
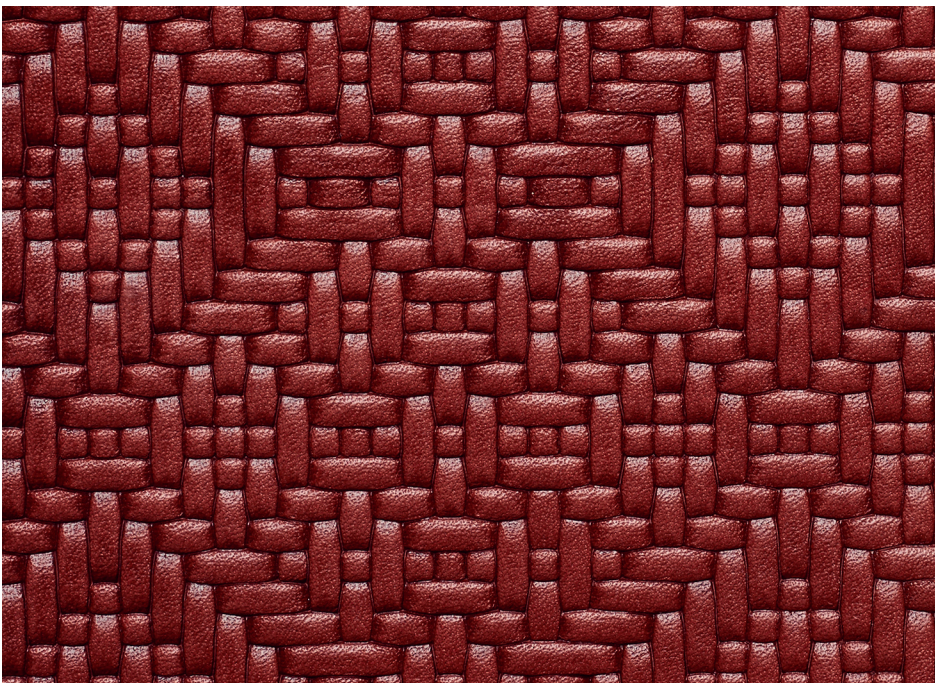
Direction of pattern on plate. Not to scale.

Photo is to show pattern only.
Choose almost any Garrett color.

Vertical Repeat: $1 \frac{3}{4}$ "
Horizontal Repeat: $1 \frac{7}{8}$ "

Pictured: Rattan embossed on
NC5030 Newport Club Devon.

Bases



Direction of pattern on plate. Not to scale.

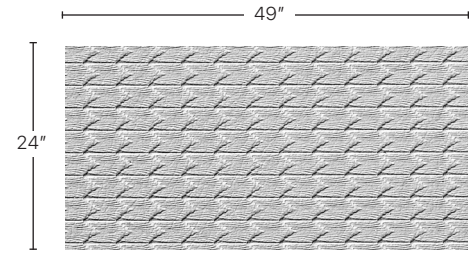
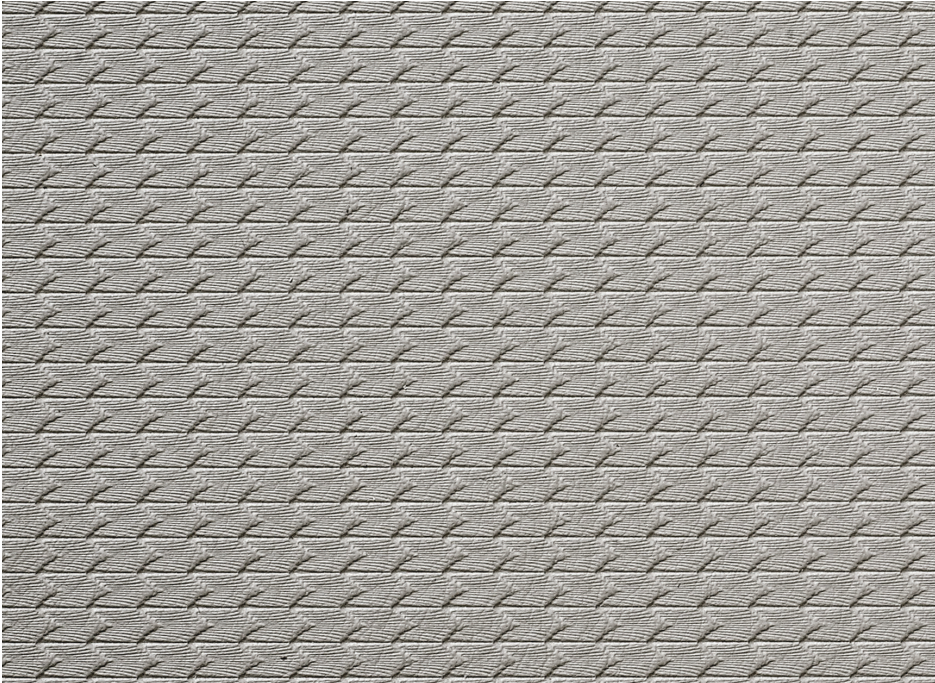
Photo is to show pattern only.
Choose almost any Garrett color.

Vertical Repeat: $2 \frac{1}{2}$ "
Horizontal Repeat: $3 \frac{1}{2}$ "

Pictured: Bases embossed on
V345 Vintage Chianti.

Geometric

Herringbone



Direction of pattern on plate. Not to scale.

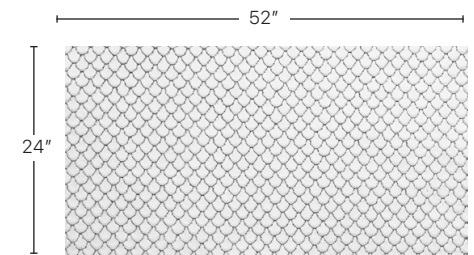
Photo is to show pattern only.
Choose almost any Garrett color.

Vertical Repeat: 1/4"
Horizontal Repeat: 3/16"

Pictured: Herringbone embossed
on A282 Avion Zinc.

Organic

Teardrop



Direction of pattern on plate. Not to scale.

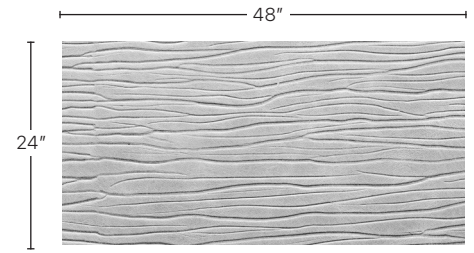
Photo is to show pattern only.
Choose almost any Garrett color.

Vertical Repeat: 1/4"
Horizontal Repeat: 1/4"

Pictured: Teardrop embossed
on P322 Pearlescence Frost.

Organic

Bark



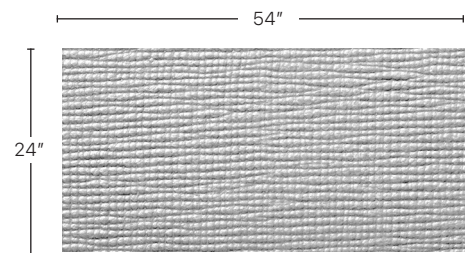
Direction of pattern on plate. Not to scale.

Photo is to show pattern only.
Choose almost any Garrett color.

Vertical Repeat: 6"
Horizontal Repeat: 11"

Pictured: Bark embossed on
DIS9001 Distressed Irish Cream.

Boxboard



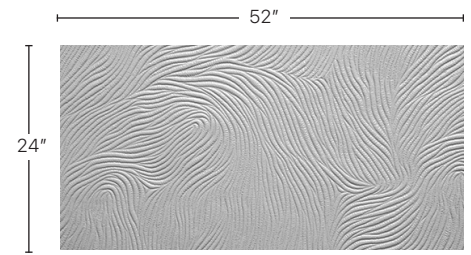
Direction of pattern on plate. Not to scale.

Photo is to show pattern only.
Choose almost any Garrett color.

Vertical Repeat: n/a
Horizontal Repeat: n/a

Pictured: Boxboard embossed on
C657 Chatham Fudge.

Sand Dune



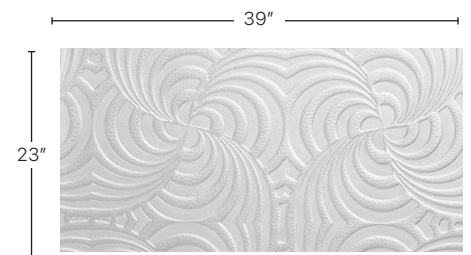
Direction of pattern on plate. Not to scale.

Photo is to show pattern only.
Choose almost any Garrett color.

Vertical Repeat: 10 1/2"
Horizontal Repeat: 7"

Pictured: Sand Dune embossed
on NAT062 Native Seneca.

Dreamcatcher



Direction of pattern on plate. Not to scale.

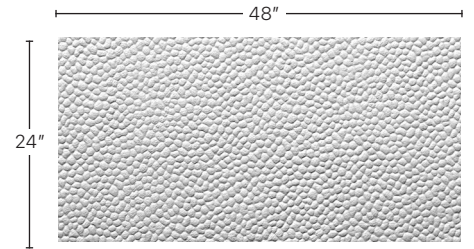
Photo is to show pattern only.
Choose almost any Garrett color.

Vertical Repeat: 3 1/2"
Horizontal Repeat: 3 1/2"

Pictured: Dreamcatcher
embossed on DIS9090
Distressed Palomino.

Organic

Scotch Grain



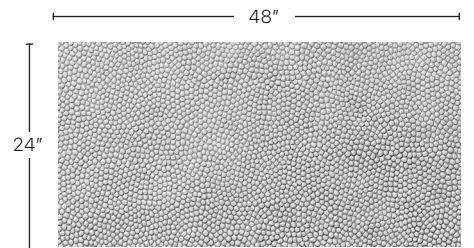
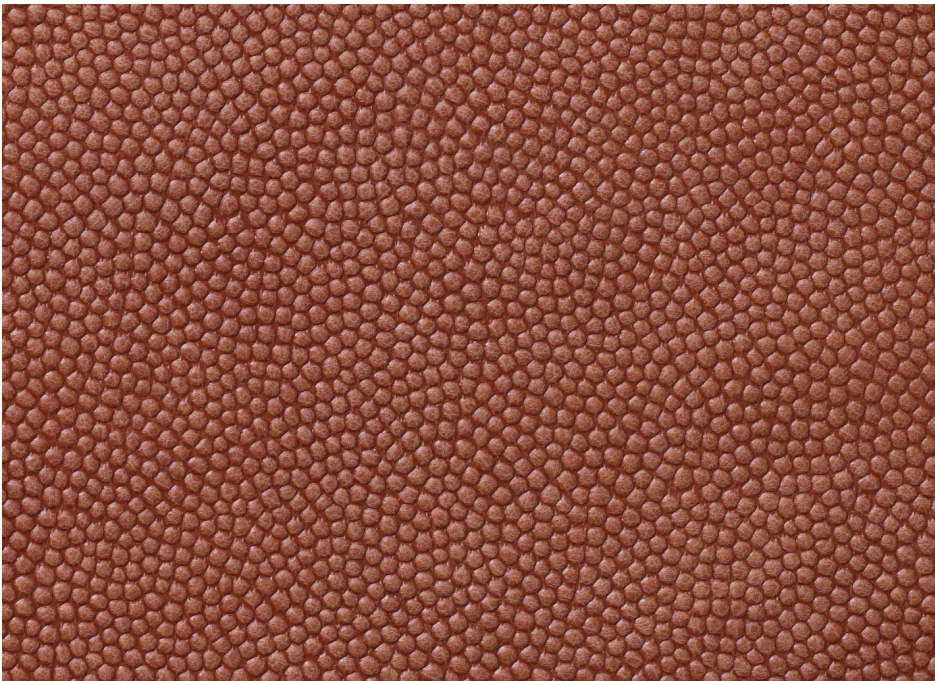
Direction of pattern on plate. Not to scale.

Photo is to show pattern only.
Choose almost any Garrett color.

Vertical Repeat: n/a
Horizontal Repeat: n/a

Pictured: Scotch Grain embossed on C648 Chatham Chino.

Football



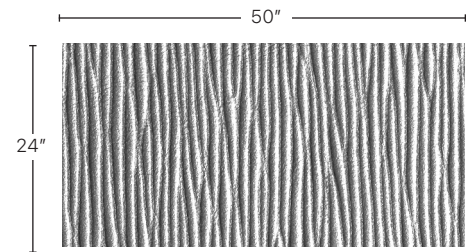
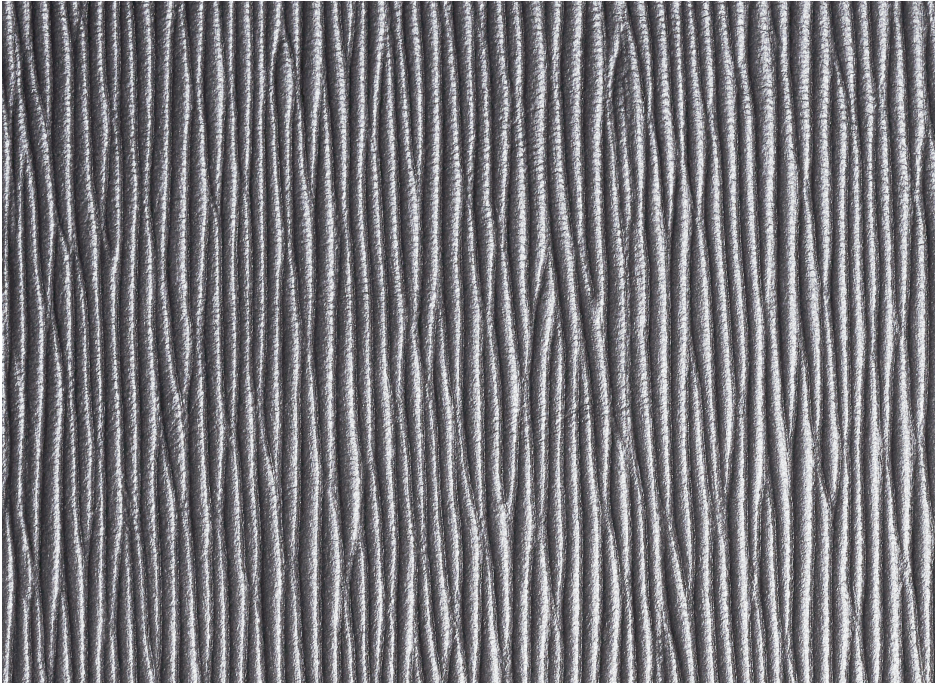
Direction of pattern on plate. Not to scale.

Photo is to show pattern only.
Choose almost any Garrett color.

Vertical Repeat: $2 \frac{7}{8}$ "
Horizontal Repeat: 11"

Pictured: Football embossed on DIS9030 Distressed Russet.

Waterfall



Direction of pattern on plate. Not to scale.

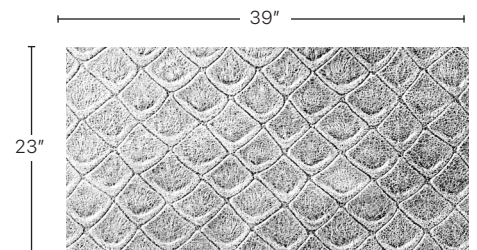
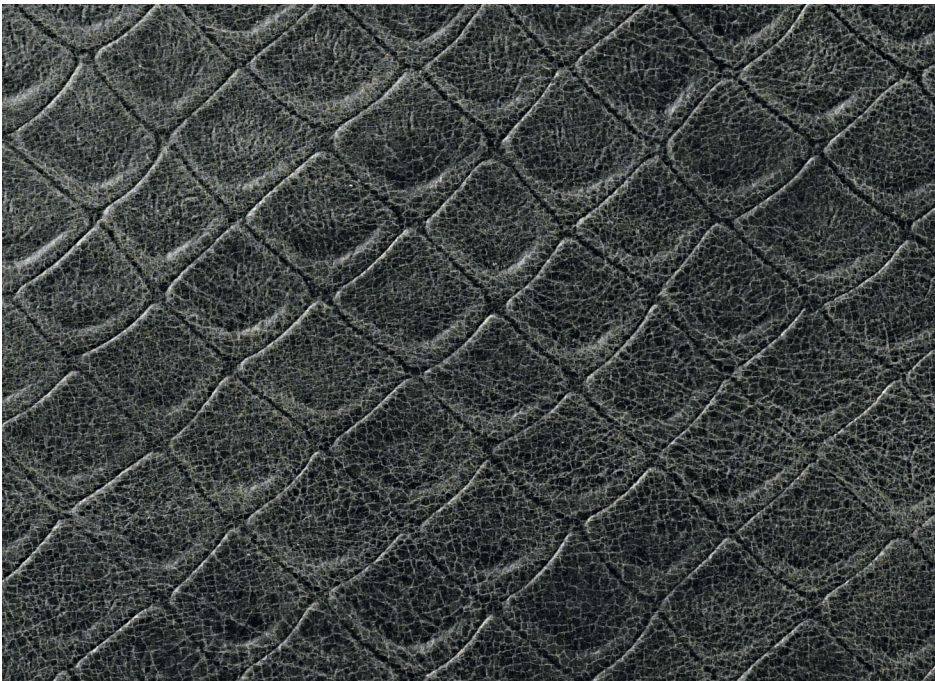
Photo is to show pattern only.
Choose almost any Garrett color.

Vertical Repeat: n/a
Horizontal Repeat: n/a

Pictured: Waterfall embossed on
P392 Pearlessence Carbon

Animal

Dinosaur



Direction of pattern on plate. Not to scale.

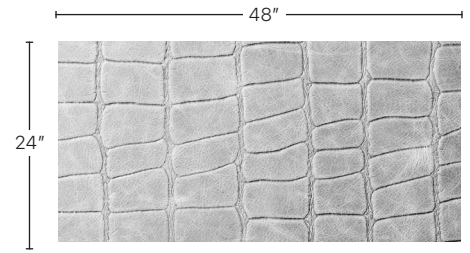
Photo is to show pattern only.
Choose almost any Garrett color.

Vertical Repeat: 5 1/2"
Horizontal Repeat: 9"

Pictured: Dinosaur embossed on
DIS9052 Distressed Anthracite.

Animal

Jumbo Croc



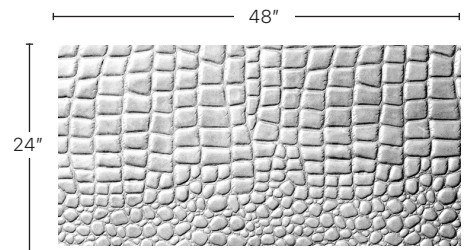
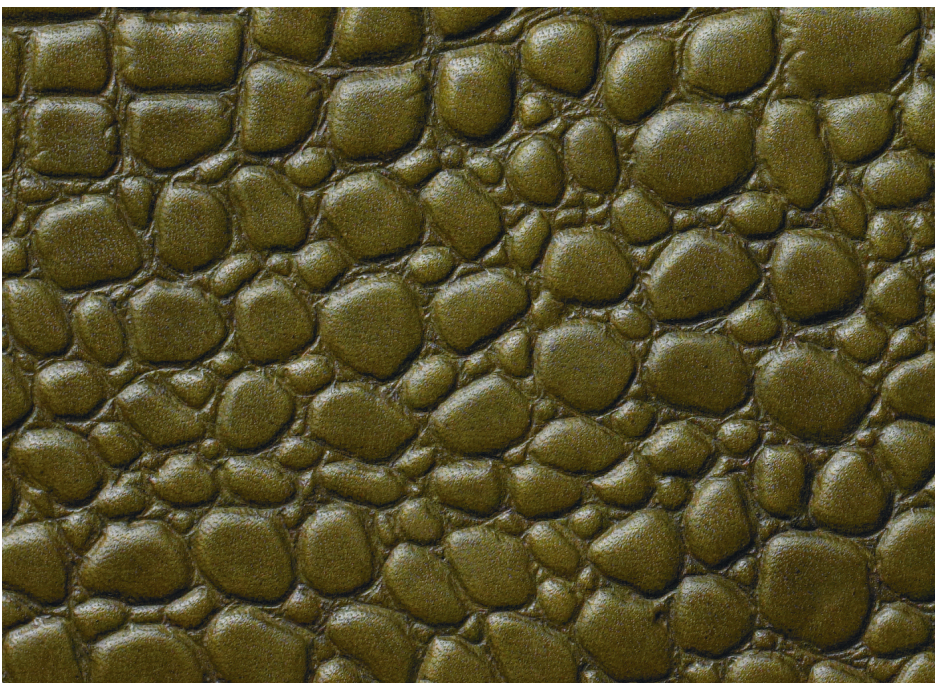
Direction of pattern on plate. Not to scale.

Photo is to show pattern only.
Choose almost any Garrett color.

Vertical Repeat: 24"
Horizontal Repeat: 8 1/2"

Pictured: Jumbo Croc embossed
on DIS9075 Distressed Fennel.

Florida Gator



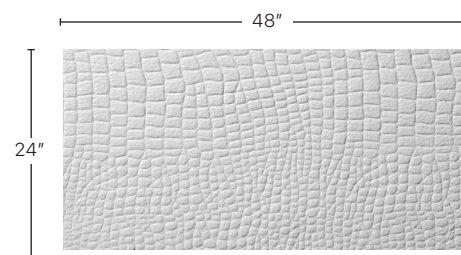
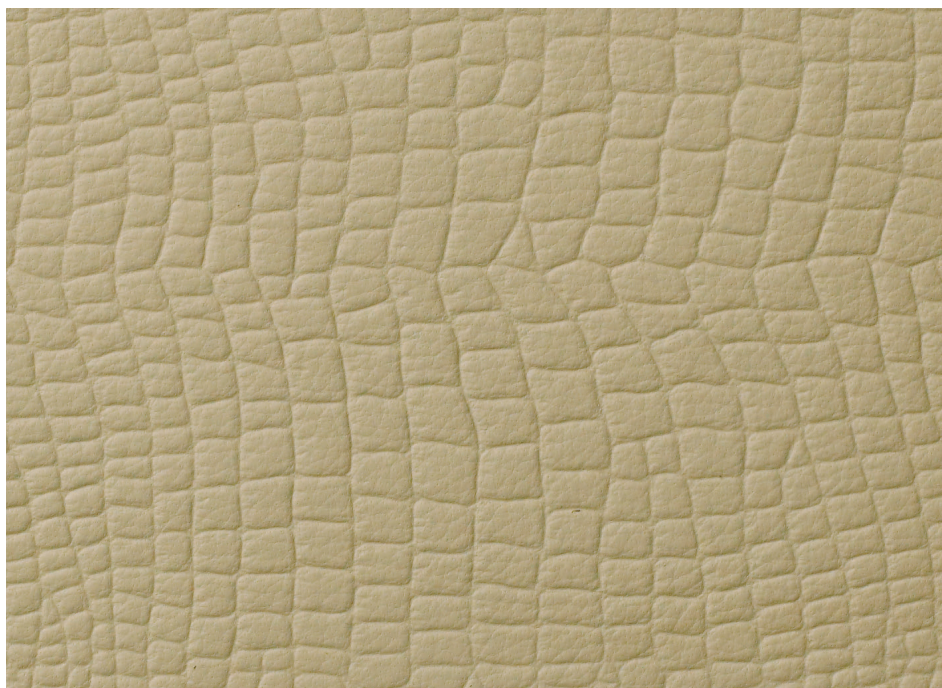
Direction of pattern on plate. Not to scale.

Photo is to show pattern only.
Choose almost any Garrett color.

Vertical Repeat: 7"
Horizontal Repeat: 12"

Pictured: Florida Gator embossed
on V334 Vintage Moss.

Alligator



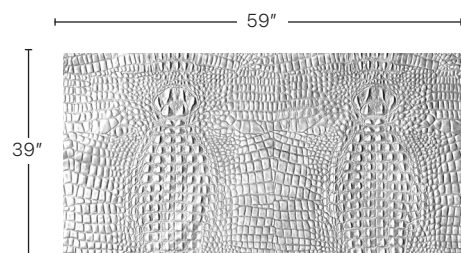
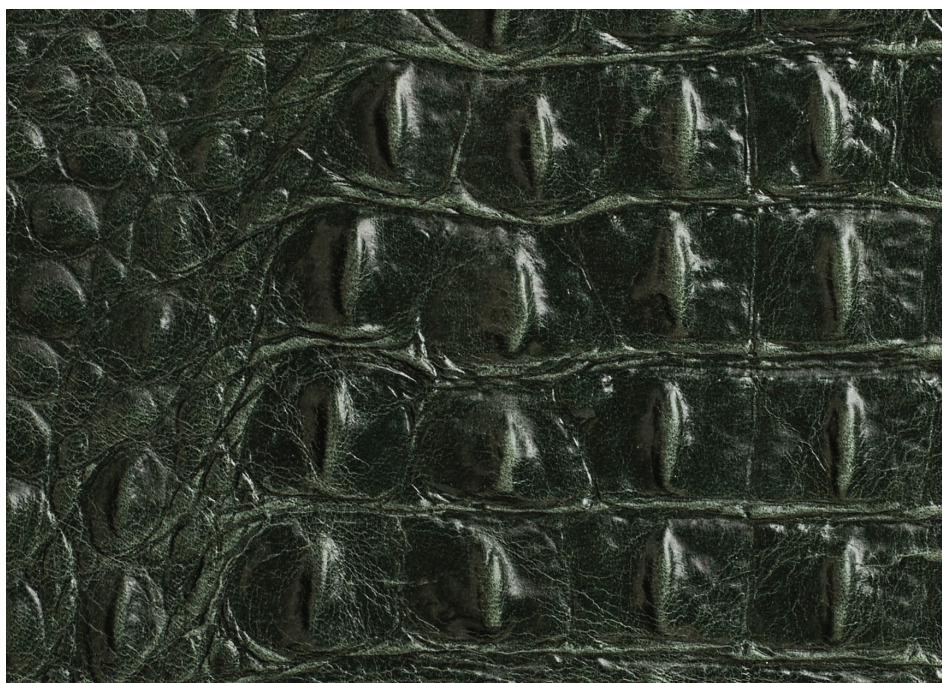
Direction of pattern on plate. Not to scale.

Photo is to show pattern only.
Choose almost any Garrett color.

Vertical Repeat: $4 \frac{9}{16}$ "
Horizontal Repeat: 6"

Pictured: Alligator embossed on
A224 Avion Aloe.

Caiman



Direction of pattern on plate. Not to scale.

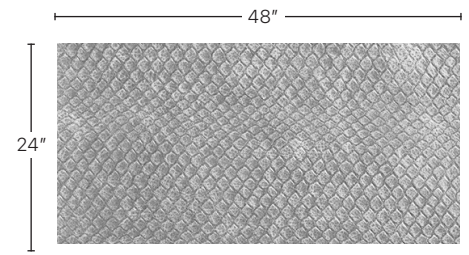
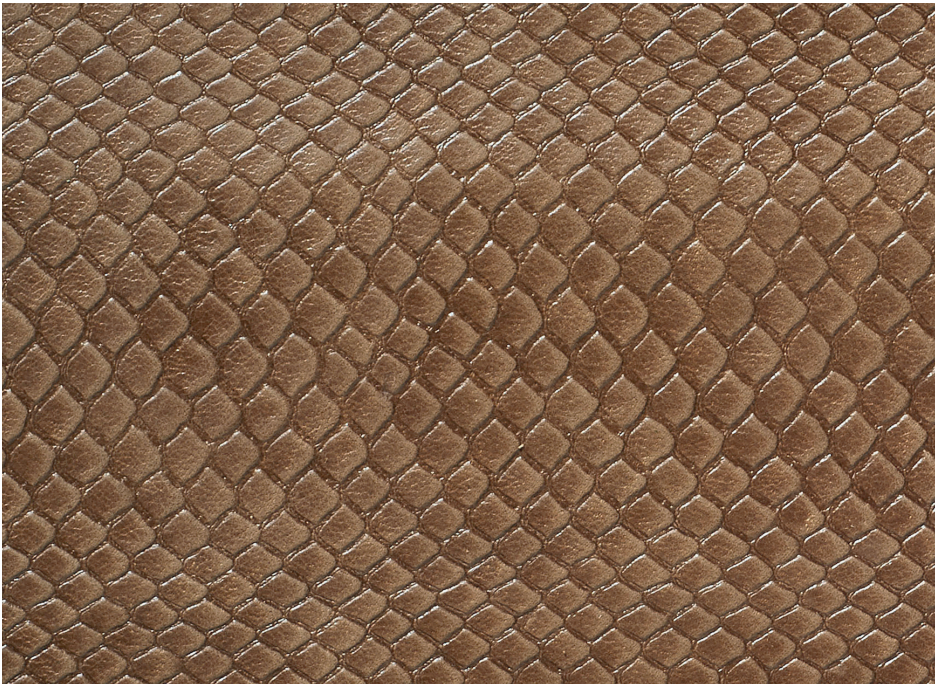
Photo is to show pattern only. Caiman is the only Impress pattern that is embossed in Italy and may be done on most Garrett leathers. Sold in both whole and half hides with a five week lead time.

Vertical Repeat: 23"
Horizontal Repeat: 17"

Pictured: Caiman embossed on
DIS9020 Distressed Verde.

Animal

Anaconda



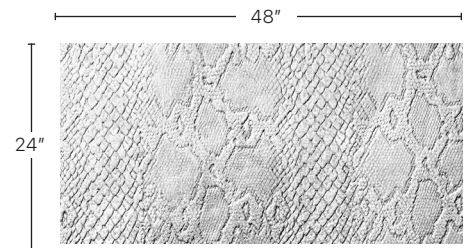
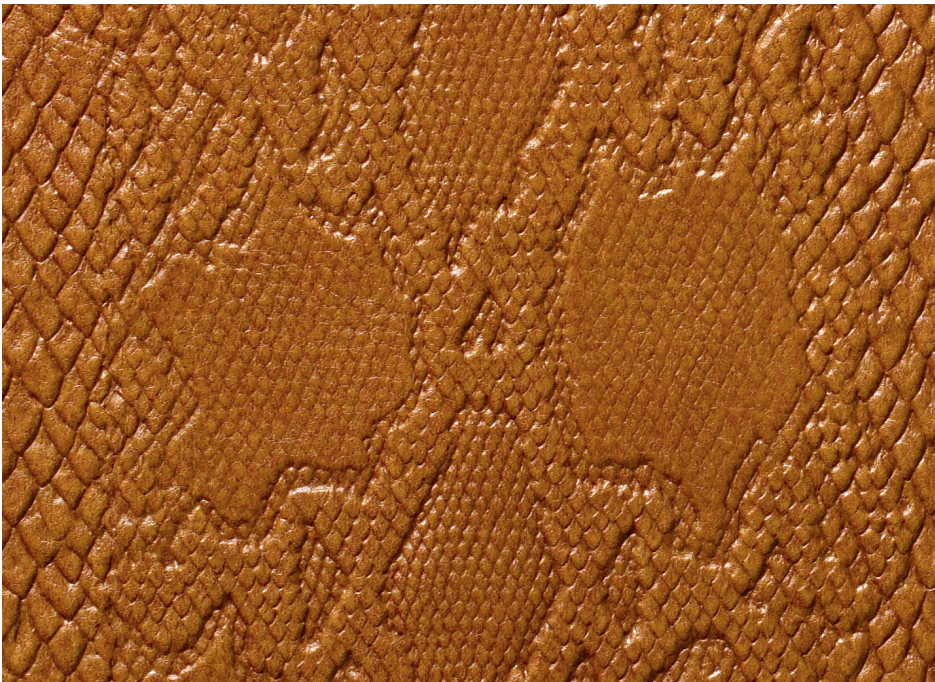
Direction of pattern on plate. Not to scale.

Photo is to show pattern only.
Choose almost any Garrett color.

Vertical Repeat: 2 1/2"
Horizontal Repeat: 3 1/2"

Pictured: Anaconda embossed on
DIS9005 Distressed Nutmeg.

Python



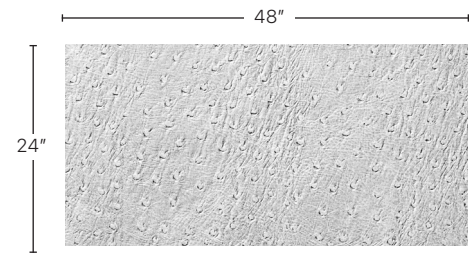
Direction of pattern on plate. Not to scale.

Photo is to show pattern only.
Choose almost any Garrett color.

Vertical Repeat: 12 1/4"
Horizontal Repeat: 5 1/2"

Pictured: Python embossed on
V301 Vintage Oak.

Ostrich



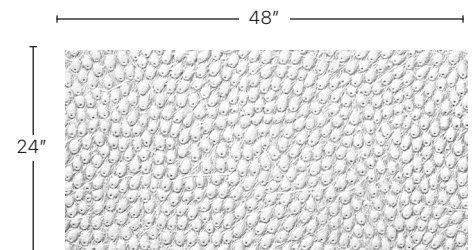
Direction of pattern on plate. Not to scale.

Photo is to show pattern only.
Choose almost any Garrett color.

Vertical Repeat: 4 1/4"
Horizontal Repeat: 8 1/2"

Pictured: Ostrich embossed on
DIS9037 Distressed Lynx.

Asian Ostrich



Direction of pattern on plate. Not to scale.

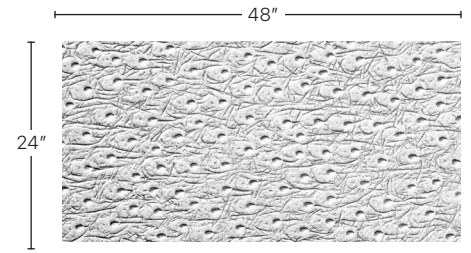
Photo is to show pattern only.
Choose almost any Garrett color.

Vertical Repeat: 11 1/8"
Horizontal Repeat: 5"

Pictured: Asian Ostrich
embossed on DIS9090
Distressed Palomino.

Animal

Baby Ostrich



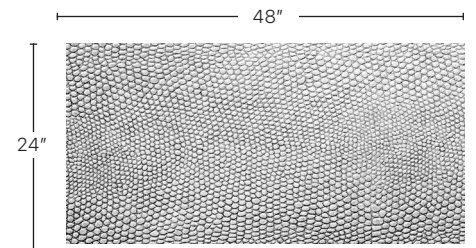
Direction of pattern on plate. Not to scale.

Photo is to show pattern only.
Choose almost any Garrett color.

Vertical Repeat: 9"
Horizontal Repeat: 9 1/4"

Pictured: Baby Ostrich embossed
on DIS9071 Distressed Brass.

Lizard



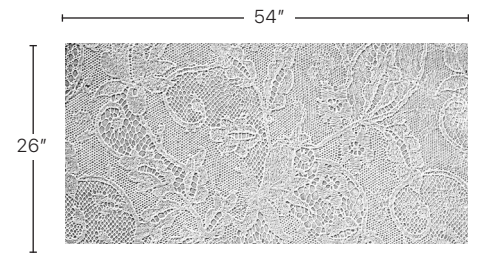
Direction of pattern on plate. Not to scale.

Photo is to show pattern only.
Choose almost any Garrett color.

Vertical Repeat: 4 1/8"
Horizontal Repeat: 2 3/4"

Pictured: Lizard embossed
on NAT062 Native Seneca.

Lace



Direction of pattern on plate. Not to scale.

Photo is to show pattern only.
Choose almost any Garrett color.

Vertical Repeat: $6 \frac{3}{4}$ "
Horizontal Repeat: 7"

Pictured: Lace embossed on
DIS9090 Distressed Palomino.

Flower Garden



Direction of pattern on plate. Not to scale.

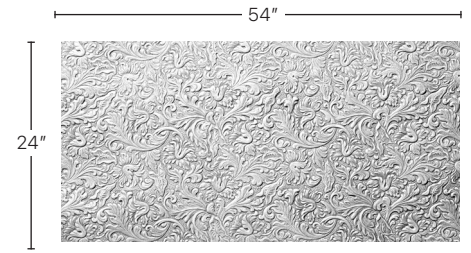
Photo is to show pattern only.
Choose almost any Garrett color.

Vertical Repeat: $9 \frac{1}{2}$ "
Horizontal Repeat: $7 \frac{3}{8}$ "

Pictured: Flower Garden
embossed on NAT084
Native Mohican.

Floral

Saddle



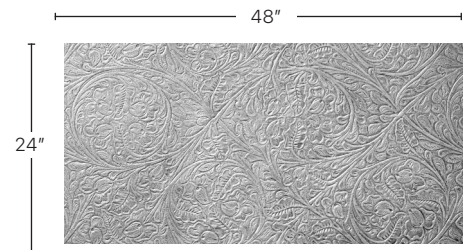
Direction of pattern on plate. Not to scale.

Photo is to show pattern only.
Choose almost any Garrett color.

Vertical Repeat: 3 1/4"
Horizontal Repeat: 6"

Pictured: Saddle embossed on
DIS9071 Distressed Brass.

Western Tool



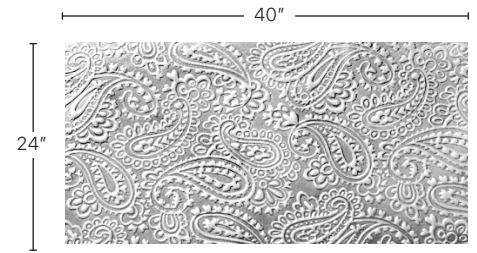
Direction of pattern on plate. Not to scale.

Photo is to show pattern only.
Choose almost any Garrett color.

Vertical Repeat: 6 1/4"
Horizontal Repeat: 13 1/8"

Pictured: Western Tool
embossed on V312 Vintage Elk.

Paisley



Direction of pattern on plate. Not to scale.

Photo is to show pattern only.
Choose almost any Garrett color.

Vertical Repeat: 4 1/2"
Horizontal Repeat: 6"

Pictured: Paisley embossed
on V345 Vintage Chianti.

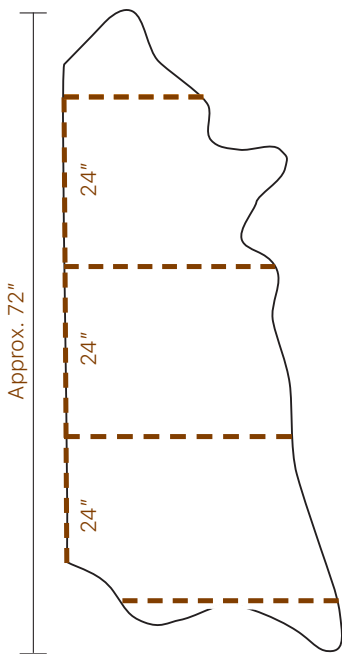
Ordering Information

The photographs in this brochure show each pattern at 100% scale, or actual size. These are to show pattern only. You may specify the color of your choice for each pattern. Separate samples of colors and patterns are available upon request.

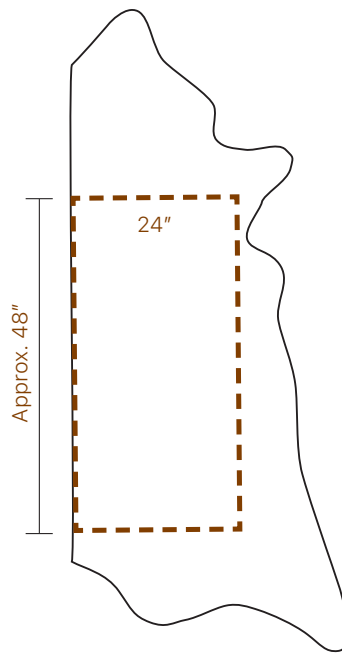
Impress is produced using a combination of heat and pressure to emboss specific patterns on leather. When specifying Impress, there are a number of items to keep in mind:

- Choose almost any Garrett color. Some leathers may not be suitable for embossing. Please check with your local Account Executive or Client Services Representative for details.
- A 10" x 10" sample of a specific Impress pattern on a specified color of Garrett leather is available for a small fee. The fee is reimbursable upon placement of an order. Please allow two weeks for all special sample requests.
- All Impress patterns, with the exception of Caiman, are available in half hide increments only.
- Embossing plates are laid down the length of the half hide as 24" high and 40-54" wide (depending on specific plate size). There may be some plating marks and/or small overlapping areas of the pattern due to the nature of plate embossing. There will be a slight seam every 24" down the length of the hide.
- Lead-time for Impress orders is two weeks from receipt of confirming purchase order and applicable deposit.

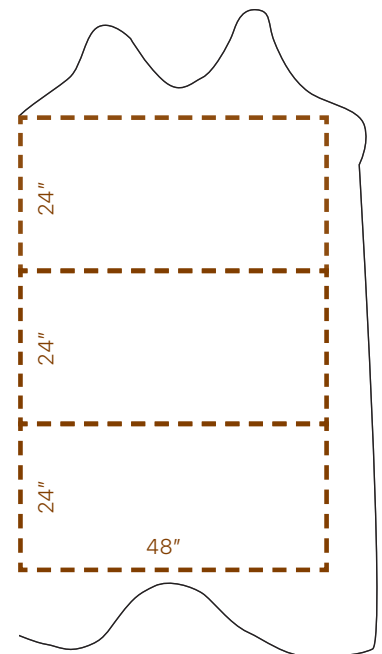
Layout Options



Option 1:
Standard option. Embossing plates are placed horizontally.



Option 2:
Allows for change in the direction of the pattern on the hide. This option will result in a lower cutting yield.



Option 3:
Offers a higher cutting yield. However, the pattern will not reach the edge of the whole hide. Customer must purchase the entire hide. The hide will be trimmed prior to embossing.

Please note: Plate sizes vary. Some pattern plates are up to 54" wide.





Impress

Vintage Prussian Blue with Impress Rattan
University Club of Chicago
Photographed by Michael Mandolfo, Forest Productions

02/24

GARRETT.

LEATHER

800.342.7738 | garrettleather.com